

# Installation Instructions



Weight of heaviest part 7kg (Metallophone)

1. Attach the steel mount to the rear of the instrument with the M8 x20 screws and 2 part security caps. **(1.1)** (See Assembly Guide)

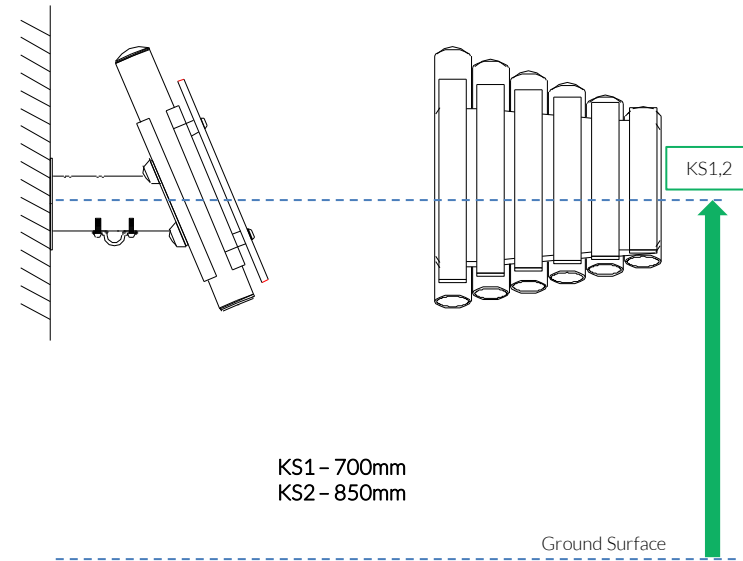
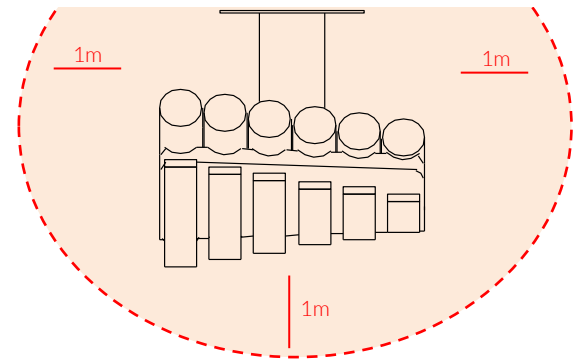
2. Attach Railing Mount to Fence with M8x40 and Barrel Nuts provided. Make sure this is locked tightly into place (See Assembly Guide)

3. Fix Metallophone onto Plastic railing mounts at desired height for users using screws provided (See Assembly Guide)

4. Fix through Plate with fixings supplied in correct orientation and height for intended Key stage. Cover Fixings with 2 Part Caps supplied

5. Attach the 1 pair of beater to the saddle strap on the leg. **(1.3)**

Install Instrument with 1m free space (from widest point) around it.



KS1 – 700mm  
KS2 – 850mm

Ground Surface

## Wall Fixed Rainbow Trio Metallophone Page 1 of 2



### Instrument Components:

- x4  
M8x20 Security Screw
- x2  
M6x20 Security Screw
- x4  
2 Part Cover Cap
- x1  
M6 Saddle Strap

Metric Conversion:  
700mm/ 28"  
850mm/ 33"  
1m/ 39"



### Fence Fix Components:

- x4
- x4
- x8
- x8



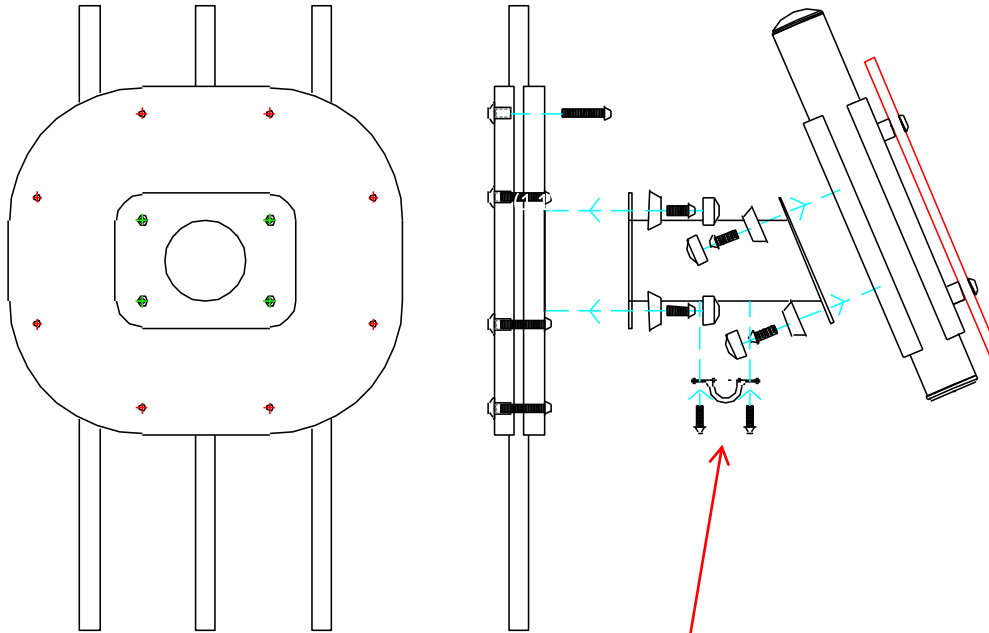
Spares available from [percussionplay.com](http://percussionplay.com) or from your local distributor

7 Kg

Tools:

TX 30 Driver Bit x1 TX 40 Driver Bit x2

Wall Fixed  
Rainbow Trio  
Metallophone  
Page 2 of 2



Thread Lock Solution  
Required (Not Supplied)

## COMPONENTS LIST:

- 2 Part Cover Cap X8
- M8 Nyloc nut X4
- Saddle Strap X1
- M6x20 Pin torx X2
- M8x20 Pin torx X8
- M8x40 Pin torx X8
- M8x16 Barrel Nut X8

- Instrument Components:
- x4  
M8x20 Security Screw
  - x2  
M6x20 Security Screw
  - x4  
2 Part Cover Cap
  - x1  
M6 Saddle Strap

Thread Lock Solution  
Required (Not Supplied)



Pair Small Red Beaters X1

- Fence Fix Components:
- x4  
2 Part Cover Cap
  - x8  
M8x40 Security Screw
  - x8  
M8 Barrel Nut

Spares available from [percussionplay.com](http://percussionplay.com) or from your local distributor

7 Kg