

Installation Instructions

1. Position Freechimes in desired location, according to correct Key stage height, this may require 2 persons. **Min Height 850mm**

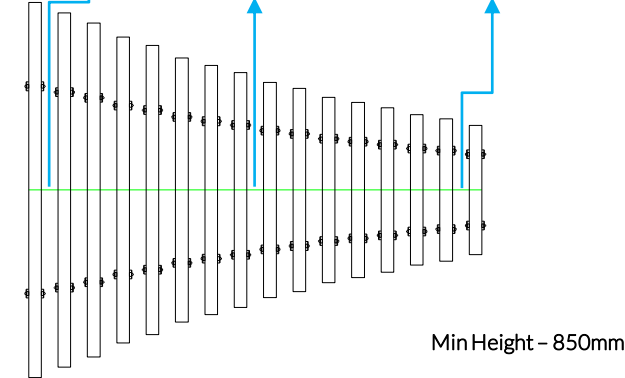
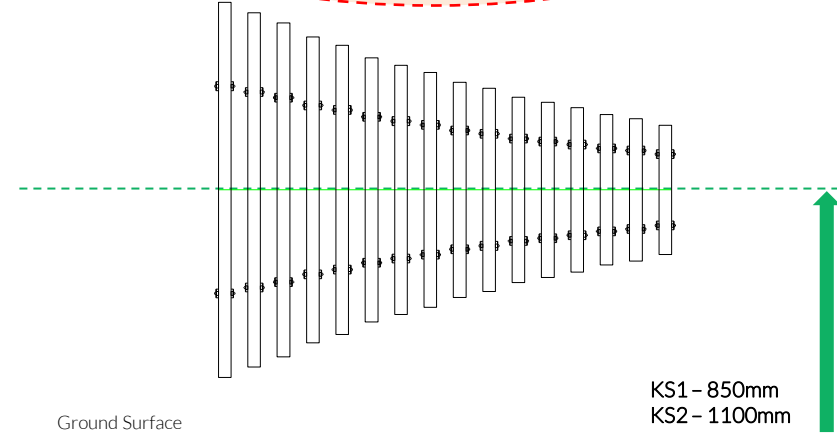
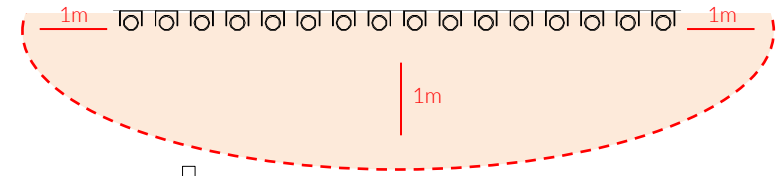
2. Mark hole locations for each of the brackets at correct spacing in desired location

3. Drill hole locations according to your chosen fixings (frame fixings, wall bolts or chemical anchors) depending of the structure of the wall.

4. Fix through Brackets to surface with suitable fixings (not supplied) in correct orientation and Key stage and attached notes with fixings provided.

5. Beaters can be fixed to Backboards or directly to wall depending on customers preference.

Install Instrument with 1m free space (from widest point) around it.



Wall Fixed Freechimes Notes Only Pentatonic Symphony



Components:



M6 Saddle Straps X3



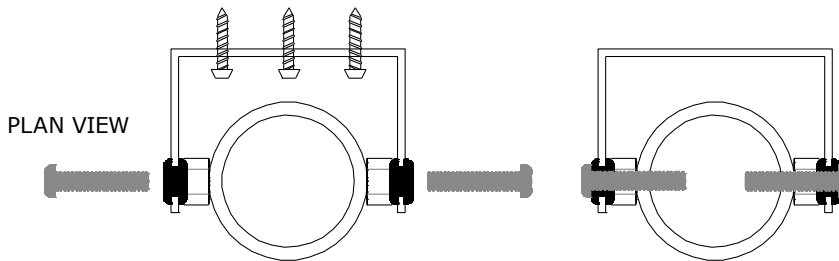
10x38mm Secure Screw X6

Thread Lock Solution Required (Not Supplied)

Metric Conversion:
850mm/ 33"
1100mm/ 43"
1m/ 39"

(460) 10x3/4 Pin Torx Pentatonic Symphony X160

(422) FREC Bracket Pentatonic Symphony X32



(419) RUBBER WASHER Pent Symphony X64

(418) RUBBER GROMMET Pent Symphony X64

(452) M6x 30 PIN TORX Pent Symphony X64



Pair Large Red Beaters X2

Wall fixings are not supplied, installer will select suitable method of fixing.



Spares available form percussionplay.com or from your local distributor

24 Kg